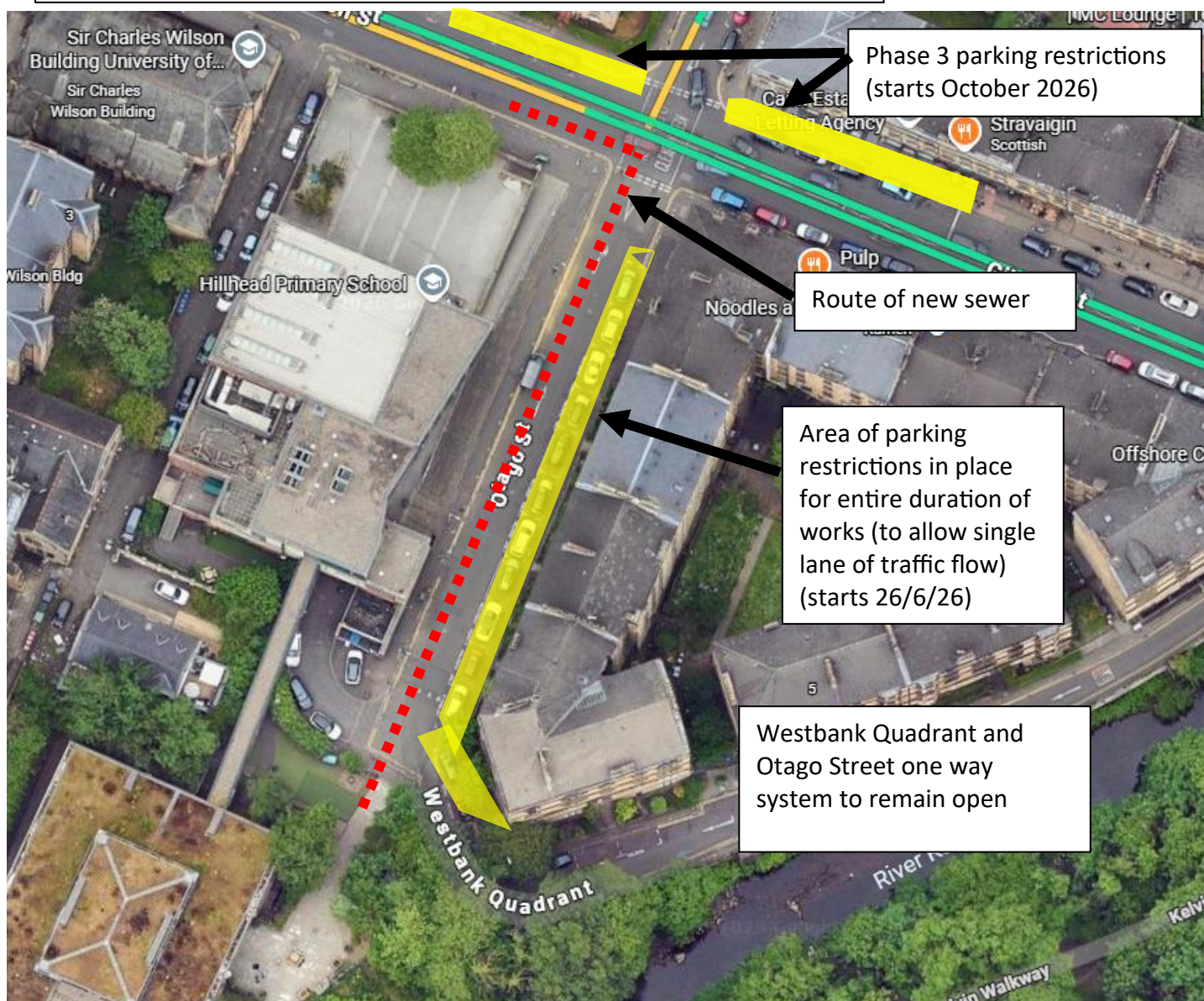


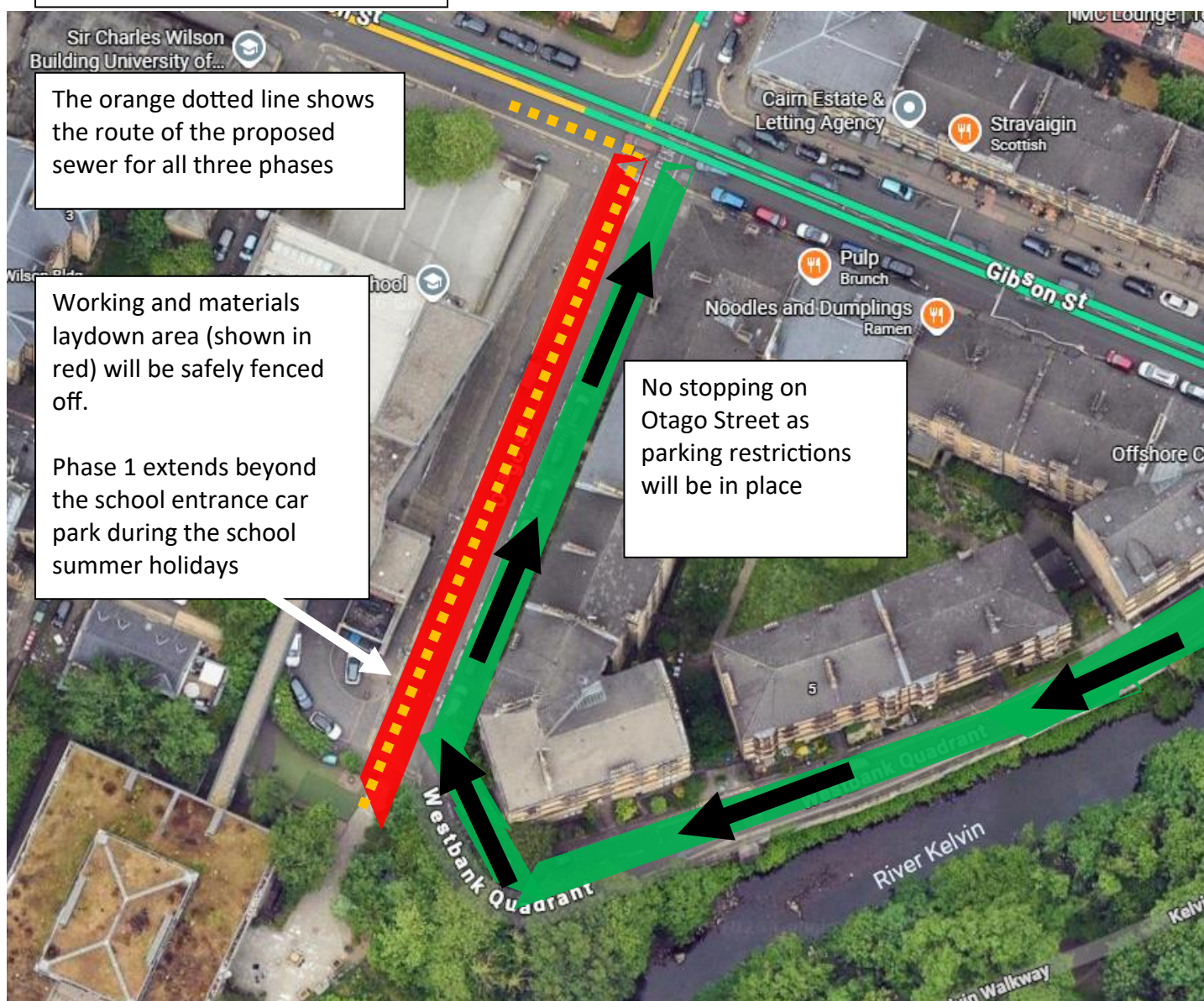
## Parking Restrictions Plan Otago Street / Westbank Quadrant



### Parking restrictions for the duration of the project.

On street parking restrictions will be required on Otago Street opposite the school steps for the duration of the project and on a section of Gibson Street for the phase 3 connection to the existing sewer.

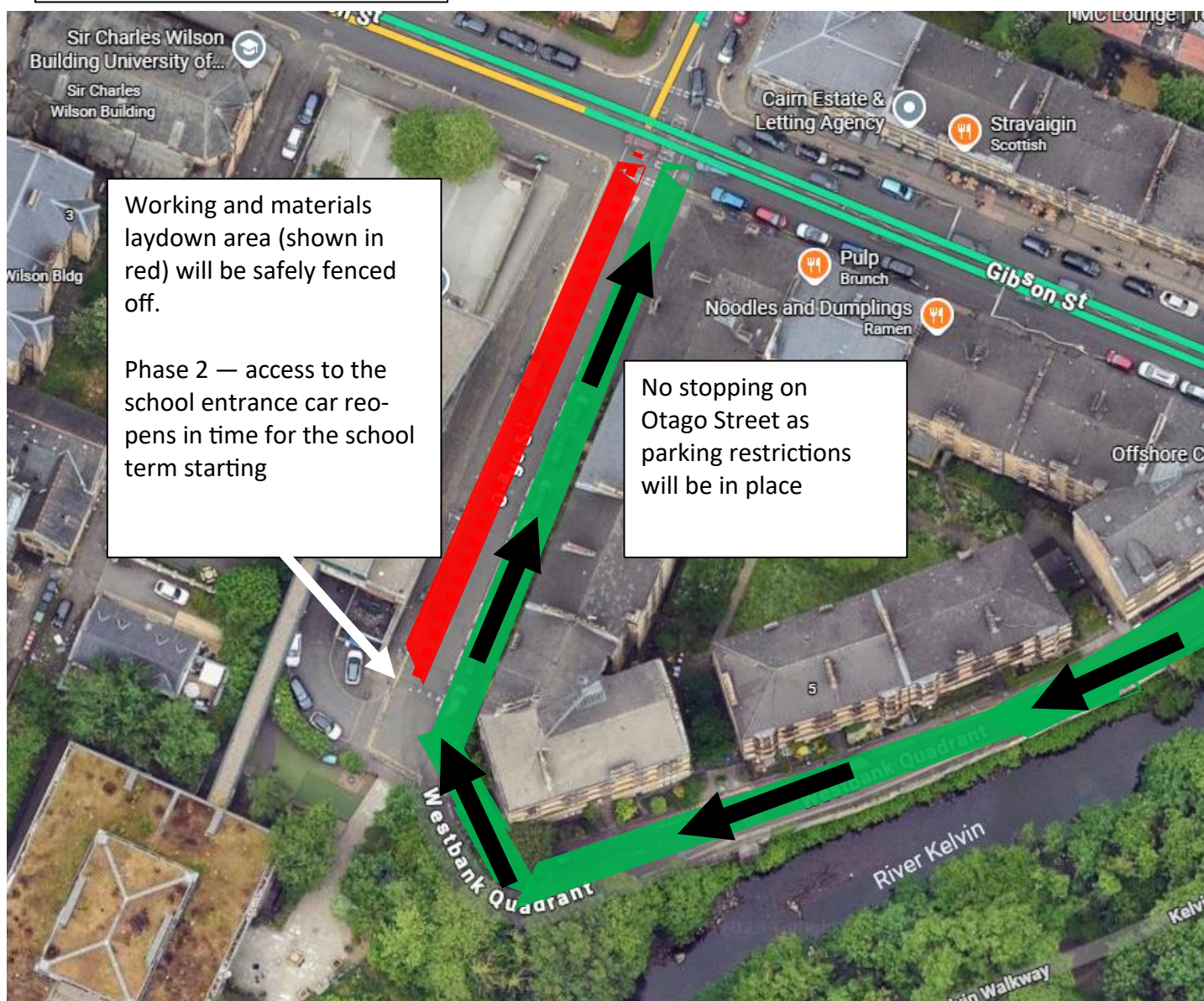
## Phase 1



### Phase 1 -26/6/26 to 7/8/26

The pipe laying will commence inside the school grounds pass the entrance of the car park. No access to the underground car park during the summer holidays. The work inside the school grounds has been planned with GCC to avoid clashing with the school term.

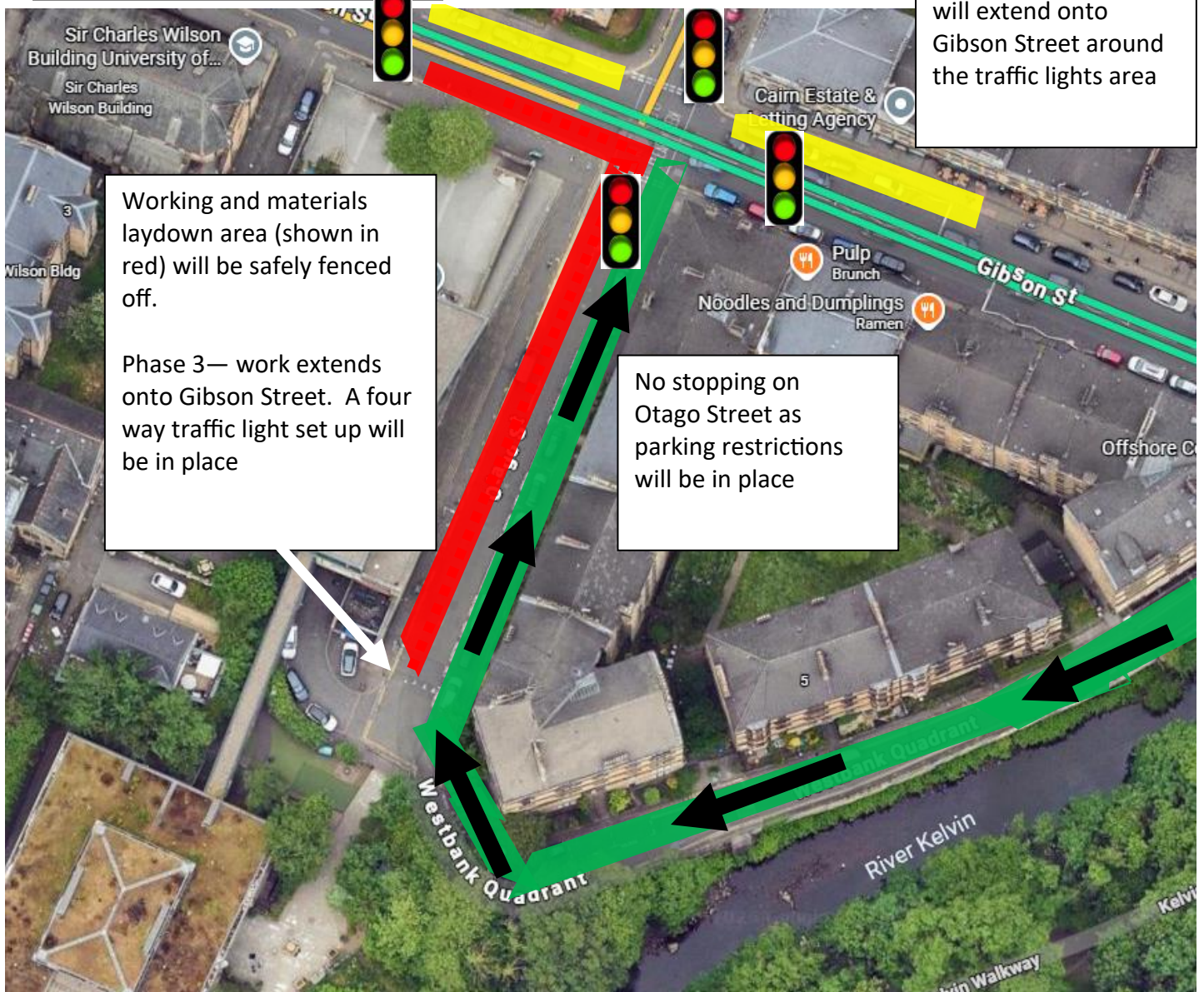
## Phase 2



### Phase 2 – 7/8/26 to October 2026

Car park reopens in time for the school restarting and the sewer laying commences along Otago Street outside the steps of the School entrance. Full access will be maintained to the school. All works will be safely fenced off using Heras Fencing.

### Phase 3



### Phase 3 October 2026 - Feb / March 2027

The sewer connects on to the existing sewer in Gibson Street.

4-way traffic lights will be required to carry out this work. (A further letter will be sent confirming dates). Work will stop for two weeks over Christmas time.

Parking restrictions will extend onto Gibson Street surrounding the works and traffic lights area.

*\* = please note the dates provided are approximate and subject to change as they are dependent on the work progress and weather conditions. We shall issue out an additional letter to give notification before the Phase 3 starts and moves onto Gibson Street.*