



**Scottish
Water**

Trusted to serve Scotland

**Bell
Ingram**

Welcome

Thank you for attending today's event about our proposed catchment resilience works at Backwater Reservoir.



The objectives of this event are to:

- Provide information and discuss the project
- Answer questions and discuss any concerns

We have information on:

- What the works involve
- Why a nature based solution is needed
- The approximate duration of the works
- The customer and community impact of the works
- How you can keep in touch and provide feedback

Please don't hesitate to speak to the team if you have any questions to ask, or feedback you'd like to give – we are happy to help!



**Scottish
Water**

Trusted to serve Scotland

**Bell
Ingram**

Taking care of your water supply

Project Overview

Scottish Water, in partnership with Bell Ingram, is exploring proposals to create new native woodland alongside ongoing peatland restoration work at Glenhead Farm, within the Backwater and Lintrathen drinking water catchment.

Backwater Reservoir provides water to around 90,000 people in Angus. In recent years, the area has faced higher temperatures, heavier rainfall, and longer dry spells. These changes affect water quality and how water flows through the landscape.



By restoring peatland and planting native woodland in the right places, we can:

- Improve raw water quality
- Help manage flooding and drought
- Make the catchment more resilient to climate change
- Support local wildlife and nature

Woodland creation will focus on poorer quality pasture and rough grazing, while some land will remain in agricultural use. The project is being designed using ecological surveys and an ecology-led approach.

This event is part of early engagement, giving local communities the chance to learn more. ask questions. and share views.



Taking care of your water supply

What is being proposed?

Glenhead Water Woods - around **600 hectares of new native broadleaf woodland** are being proposed.

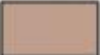


- **These woodlands will:**
 - Improve water quality
 - Slow down and store water in the landscape
 - Help reduce flooding risk
 - Support wildlife

No commercial conifer planting is proposed.

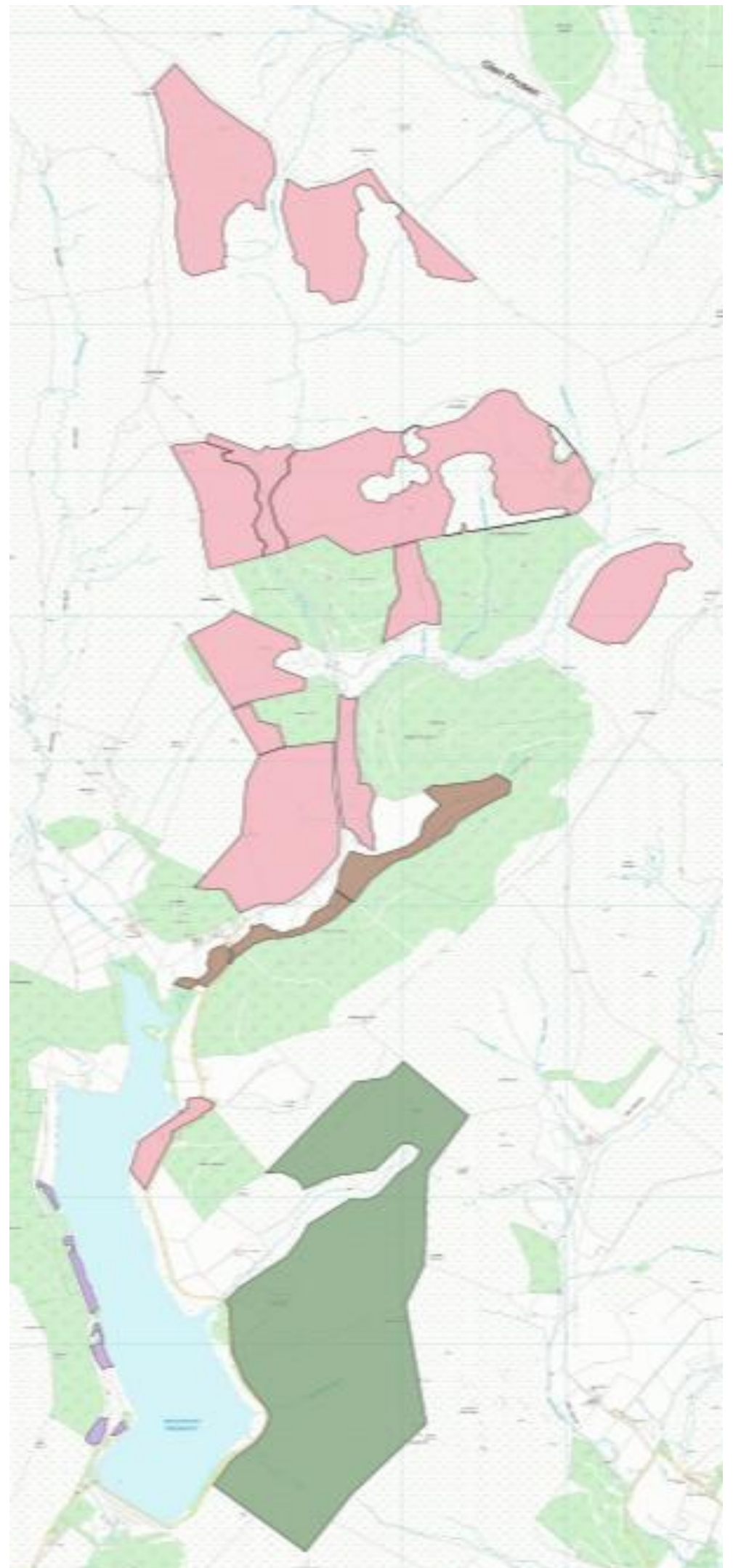
Woodland is a nature-based solution to improving catchment resilience.

Some **small areas of Scots pine** may be planted amongst broadleaf trees. Scots pine supports many specialist Scottish species and adds variety to woodland structure.

Legend

-  Hole Burn Riparian - approx. 29ha
-  West Backwater - approx 6ha
-  Glenhead - approx. 405ha
-  Creigh Hill - approx 260ha

Where we are working





**Scottish
Water**

Trusted to serve Scotland

**Bell
Ingram**

Taking care of your water supply

What we are doing.

Peatland Restoration

Peatlands play an important role in storing water and carbon.

Across the Backwater and Lintrathen catchments:

- 326 hectares of peatland has already been restored
- A further 192 hectares is planned
- Around 4,000 tonnes of CO₂ equivalent saved every year

Peatland restoration helps to:

- Improve raw water quality by slowing the water flow through the catchment and reducing organic material being washed into the reservoir during heavy rainfall
- Restore natural hydrology
- Reduce water treatment costs





Taking care of your water supply

Why is Scottish Water doing this?

Protecting Drinking Water

Healthy woodlands and peatlands improve the resilience of our water catchments through:

- Storing and recycling water naturally
- Shading rivers and streams, keeping water cooler
- Improving water quality over the long term

Carbon and Climate Action

Scottish Water aims to reach **Net Zero by 2040**.

Some emissions cannot be avoided, so Scottish Water is using its land to:

- Store carbon naturally
- Offset unavoidable emissions

This work began in **2021** and continues across Scottish Water land

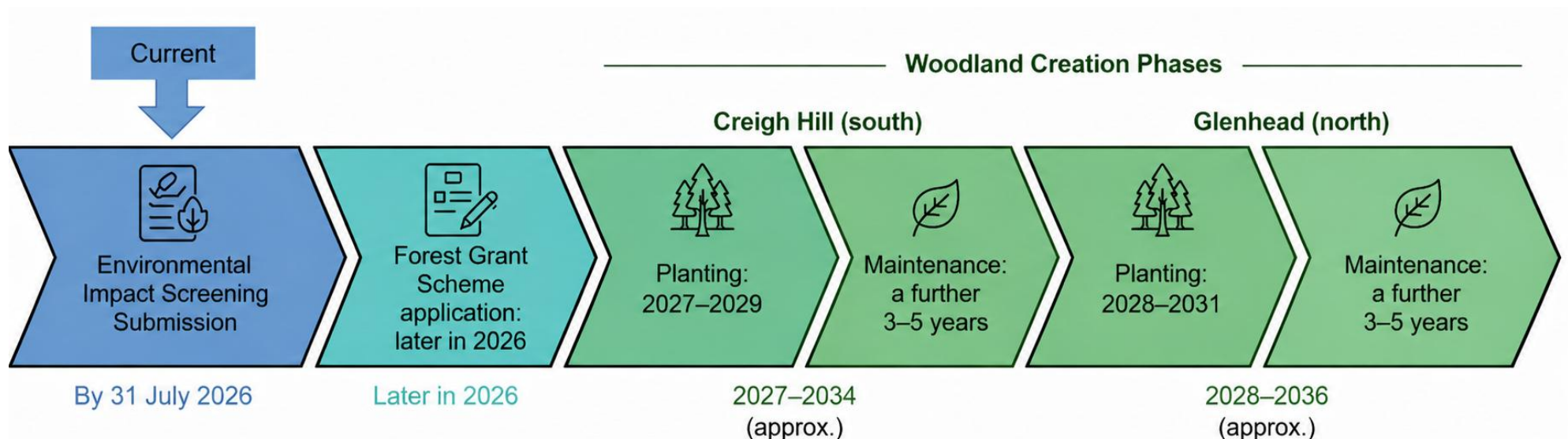
Nature and Wildlife

Looking after land sustainably is part of Scottish Water's role.

This project supports:

- Biodiversity
- Habitat restoration
- Scotland's response to the global nature emergency

Forecasted Timeline – *(Please note, dates are an early forecast and are subject to change)*





**Scottish
Water**

Trusted to serve Scotland

**Bell
Ingram**

Taking care of your water supply

Customer and Community Impact

Scottish Water aims to minimise disruption while delivering long-term benefits for water, wildlife, and the local landscape.

During Works

- Minimal vehicle traffic is expected during tree planting and fence installation
- Work will be carefully planned to reduce disturbance to local residents and land users

Landscape and Views

- A landscape and visual assessment will be carried out to consider local views and amenity
- Planting will create a mosaic of habitats and land uses, blending woodland with existing open areas

Access and Recreation

- The Scottish Outdoor Access Code will continue to be supported
- Opportunities to maintain or improve recreational access will be explored where appropriate

Nature and Biodiversity

- Improving biodiversity is a key Scottish Water objective
- Native woodland and peatland restoration will support wildlife and enhance the natural environment over time

“This project is being designed with care to balance community use, landscape character, farming activity, and environmental benefits.”





**Scottish
Water**

Trusted to serve Scotland

Keeping in touch

We are committed to keeping you, the local community, fully informed and engaged with the work we are doing.

You can access our dedicated webpage to view project progress and all our information at www.scottishwater.co.uk/Glenhead, or reach us via our **24/7 Customer Helpline**, on **0800-0778778**. Please provide our project reference **Capital/5445680000/Bellingram**, when contacting us.

Project communications will be issued via press release, customer letters, and stakeholder updates when as deemed appropriate. Updates will also be shared via Scottish Water's social media platforms:

- Instagram - scottishwater
- Facebook – www.facebook.com/scottishwater

We thank our reservoir neighbours and the wider community for their co-operation and feedback, while we plan these essential works to improve the catchment resilience.

Thank you for attending our event – please leave some feedback on one of our sticky notes before you leave!



scottishwater.co.uk/Glenhead



help@scottishwater.co.uk



0800 0778 778